

PROPERTY TABLE

SMILE UP COLOR

SMILE UP COLOR is usable for solvent-based Urethane & Lacquer System.

<Using Method>

1、Standard coating process For Example by Urethane

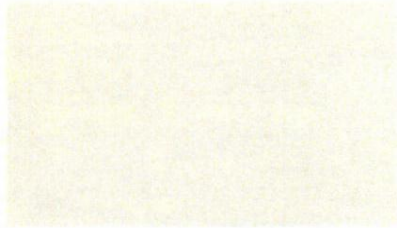
No.	Process	Material Mixing ratio	Temperature: 30° C		
			Application Method	Application quantity	Drying time
1	Surface preparation	Remove dirt and extraneous matter carefully not to hurt wood part. Oil should be wiped off with solvents, and wood resin be scrape off or be wiped off with solvents after using an electric branding iron. Holes should be filled with a wood putty.			
2	Wood sanding	Sand paper No. 180-240			
3	Coloring	Smile UP Filler 100 Smile UP Thinner#100 30-50	Brushing & wiping with clothes	30-50g/m ²	2 hours and over
4	Undercoat (once or twice)	Smile UP Sealer A liquid 100 Smile UP Sealer B liquid 50 Smile UP Thinner #200 70-90	Spraying & brushing	80-100	2 hours and over
5	Sanding	Sand paper No. 320-400			
6	Topcoat	Smile UP Top A liquid each%100 Smile UP Top B liquid 50 Smile UP Color 1~3 Smile UP Thinner #200 60-90	Spraying	80-100	1 day and over

- 2、 Before using and mixing the products, shake the containers and stir them well with sticks, and confirm that they have no sediment. Also, stir the mixed product well.
- 3、 Store the products in a dark and cool place avoiding direct sunlight.
- 4、 After using the B liquid of Smile UP Sealer and Smile UP Top, seal them hermetically because they will react with moisture in the air.
- 5、 Be careful not to leave excessive unwiped parts when you apply the Smile UP Filler. It can cause adhesion failures.
- 6、 The drying time depends on wood, temperature and humidity conditions

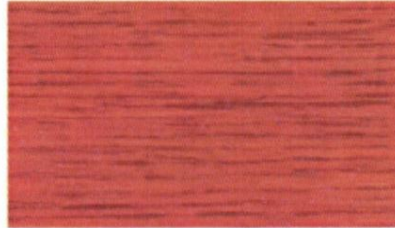
Smile Up Color

~ Smile Up System exclusive use color ~

- Color of coated wood can differ from the color sample depending on the kind of wood.
- In addition, the color sample can be different from actual coated wood because it is printed.



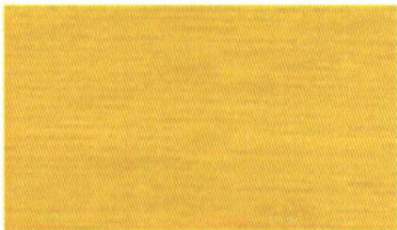
White



Charcoal Brown



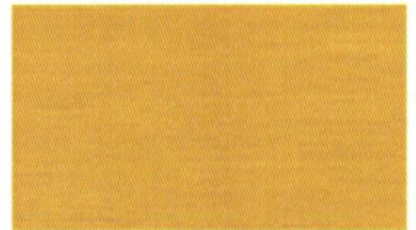
Dark Amber



Yellow



Amber



Smoke Yellow



Red



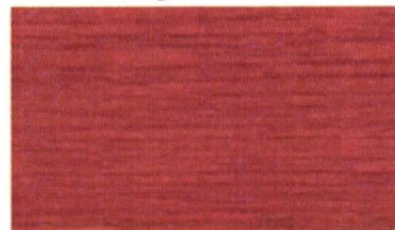
Light Oak



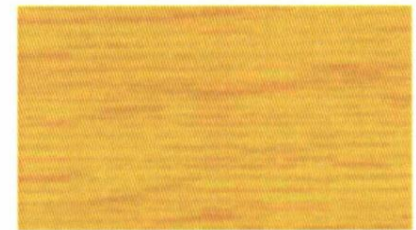
Deep Red



Marine Blue



Red Oak



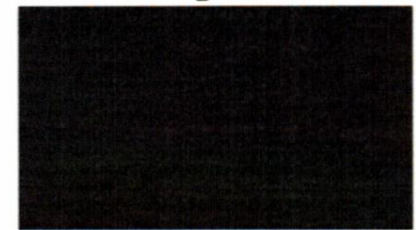
Deep Yellow



Black



Walnut



Deep Black

OTANI PAINT MANUFACTURING CO.,LTD.